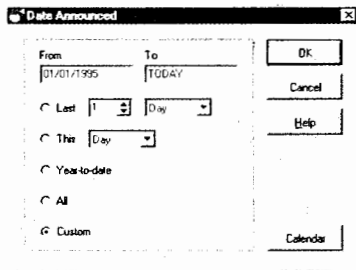


Step 1. Select a Database.

Begin your search by selecting one of over 45 database options. You can also choose to open an existing SDC Standard Session which can duplicate League Tables featured in the press, or set up basic search criteria for you.

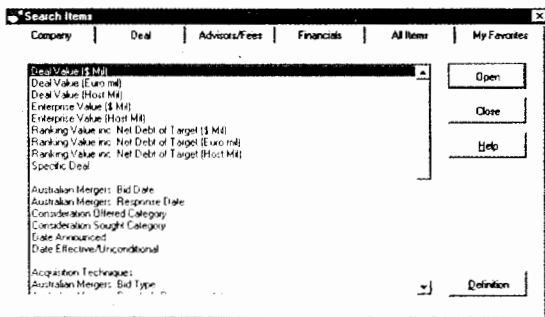
Check the desired database and click OK.

HINT: Click F1 to see complete database descriptions.



Step 2. Choose a Date Range.

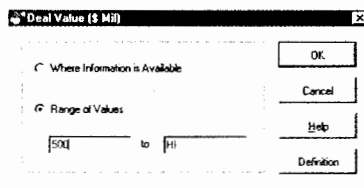
For the M&A database the date range reflects the date the merger/acquisition was announced. Enter a custom date range or choose from pre-set time periods, (e.g. Last 2 Quarters), then click OK.



Step 3. Define Your Search.

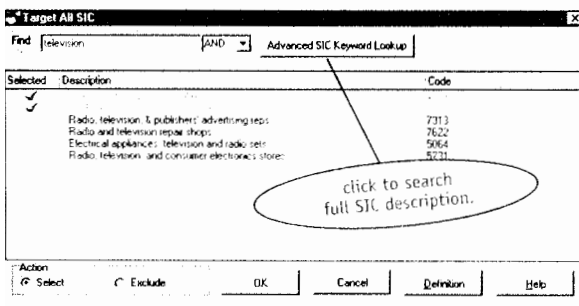
Choose from data items such as a company, nation, or industry to establish the criteria for your search. For this search we're using the value of the transaction (Deal Value) to narrow our search. Click on a data item and click Open.

HINT: The Search Items window contains lists of frequently used search items, categorized into tabs. The All Items tab lists all searchable data items. When selecting items from this tab, click the Add to My Favorites button to add any search item to the My Favorites tab.



Enter a value range for the data item selected and click OK.

For this search we've also selected the Target All SIC data item from the Company tab in the Search Items window to continue narrowing our search. Simply double-click on the items you wish to select or exclude, and click OK.

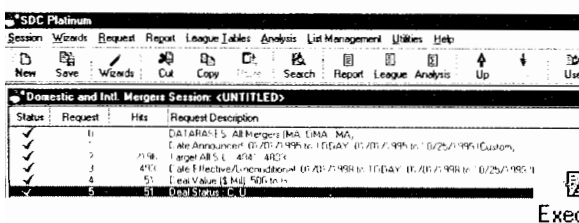


Continue selecting data items from the Search Items window until your search criteria defines the set of transactions you'd like to research.

Step 4. Refine and Execute Your Search.

Re-order requests, modify criteria, or use one of the Utilities (refer to next page). At this point we recommend that you click on Execute to see the number of transactions in your current search result.

HINT: Easily modify your criteria by double-clicking on the request description.



HELPFUL HINTS

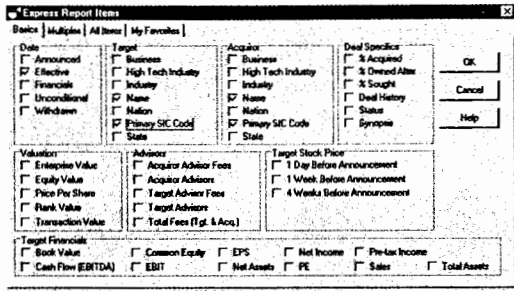
- Use SDC Platinum online help for:
- Data item definitions
 - Complete descriptions of SDC databases
 - Step-by-step instructions on specific features
 - Answers to "How can I..." questions

For context sensitive help, press F1 or click on the Help button in any window.

Access the SDC Platinum User's Handbook by clicking on Help/Users Manual

SDC Platinum™

QUICK REFERENCE GUIDE (continued)



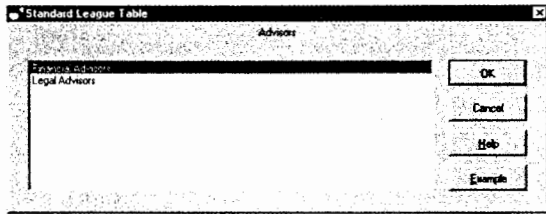
Step 5. Create a Custom Report.

From the pull-down menu, choose Reports/New Custom.

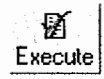
In the Express Report Items window you can choose all of the data items you'd like to appear on your report.

Or

From the pull down menu, choose League Tables/SDC Standard. In the Custom Standard Table Window choose the type of League Table you'd like to create and click on OK.



Step 6. Click on Execute.



Step 7. View & Analyze Search Results.

Download your report or ranking data to a text, Microsoft® Excel, or Lotus file before or after you execute. Instantly create pie, line and bar charts from your rank data.

HINT: Cut, copy, and paste data from any combination of reports or ranks.

Deal Number	Target Name	Acquirer Name	Target Share Address	Target Primary SIC Code	Acquirer Primary SIC Code	Acquirer Share Address
04/07/1998	Enterprise Inc.	TD Saboteur Entertainment	8095 South Chester Suite 300	4841	4841	8095 South Chester Suite 300
05/06/1998	TD Consumer Products Cable Sec	Intermedia Partners V LP	4841	4841	4841	4841
06/02/1998	LN Television Corp.	Media House Tele & Entertainment	4 Newmarket Square	4841	5789	220 Central Court Suite 1000
07/01/1998	SBC Communications Cable TV	Investor Group	4841	5792	4841	4841

Get the most out of SDC Platinum's Using Utilities

Use: Add a request to use the results of a previous search request.

View: For search results, see a breakdown of hits by database type.

For a report or rank requests, view documents.

Quick Display: Display a list of transactions for current search results. You can hand-pick transactions from this list for further use and/or select a specific transaction and click on the Zoom button to create a detailed "All Data" report.

Logical Set Operations: Union, Intersect, or Difference two or more of your search results.

Statistics: Calculate the sum, minimum, average, maximum, and median on any numerical item in your search result.

Top N Deals: Identify the top transactions in your search result, such as the top 10 M&A deals by value or the Top 25 common stock issues by manager fees.

Save Current Search Result: Save results of the last executed search result.

Load Saved Search Result: Load a previously saved search result.

SDC PLATINUM HISTORICAL COVERAGE:

- Worldwide Mergers, Acquisitions & Alliances
- U.S. Mergers & Acquisitions from
- International Mergers & Acquisitions from
- Corporate Stock Repurchase Programs from
- U.S. Corporate New Issues
- Public Offerings from
- 144A Offerings from
- Private Placements from
- Worldwide Syndicated Loans from
- Global Public Financings
- U.S. Municipal New Issues from
- International Municipal New Issues from
- Project Finance from
- Poison Pills from
- Private Equity Research from



CLIENT SERVICES

United States & Canada	1.888.989.8373	Thomson Financial
Europe	44.(0)207.369.7944	195 Broadway
Hong Kong	852.2533.5588	New York, NY 10007
Japan	81.3.5218.6580	Phone 646.822.3600